

Single Wide Homes

The Inspiration Series



**The Inspiration Series
from Fairmont Homes**

**2181 East Market Street
Nappanee, IN 46550**

800.777.8787



fairmonthomes.com

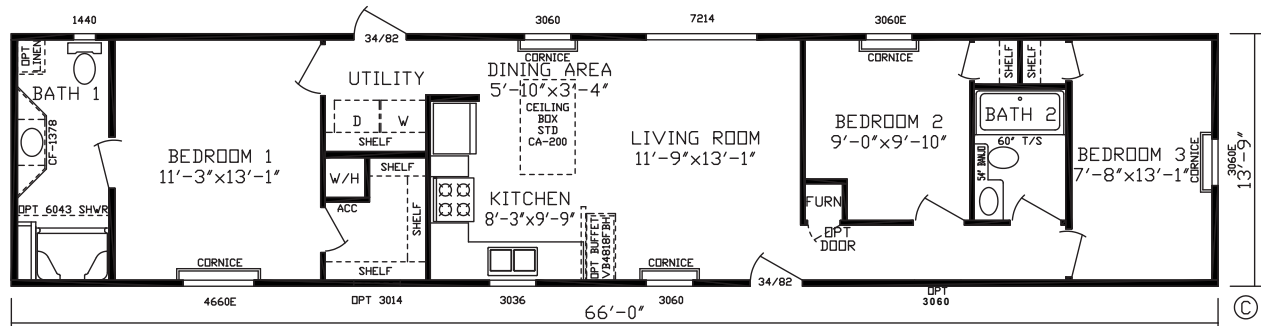
14 Wide

The Bellatrix Print #186501 3 Br 2 Bath 908 Sq. Ft.

Print #186508 — Reverse Aisle

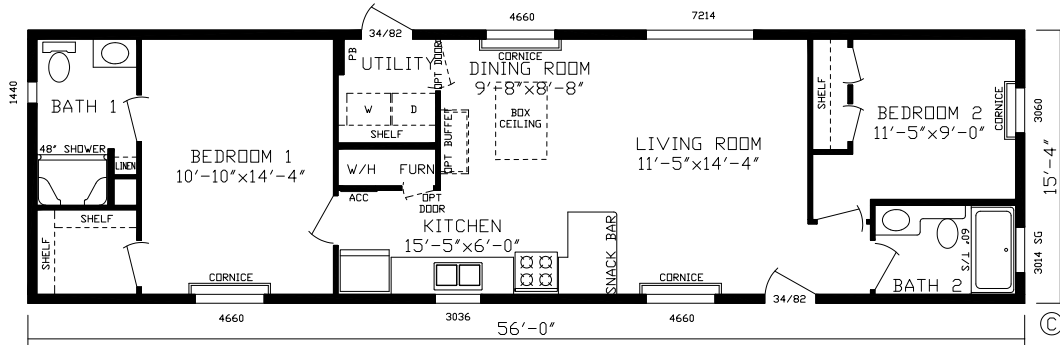
Print #186513 — 2 Bedroom

Print #186514 — 2 BR Reverse Aisle

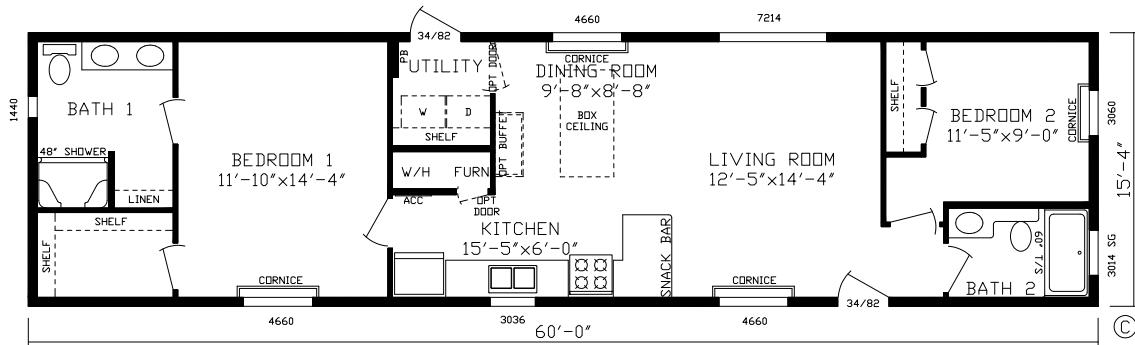


16 Wide

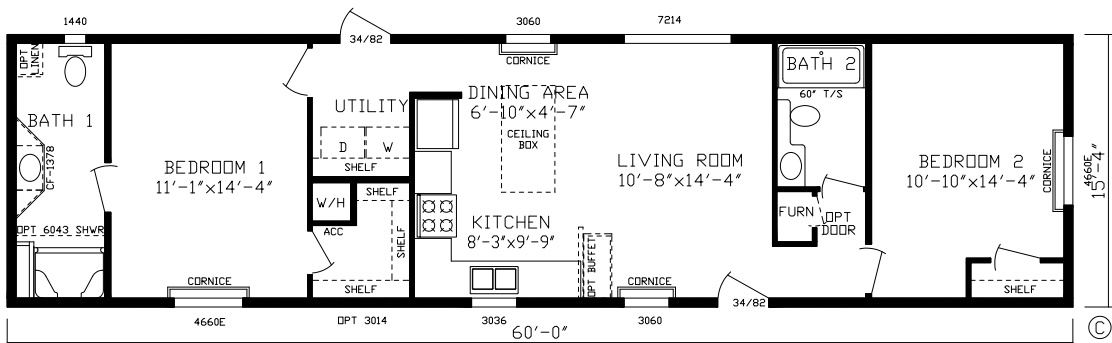
The Bell Print #186506 2 Br 2 Bath 859 Sq. Ft.



The Harrison Print #186505 2 Br 2 Bath 920 Sq. Ft. Print #186530 — Reverse Aisle

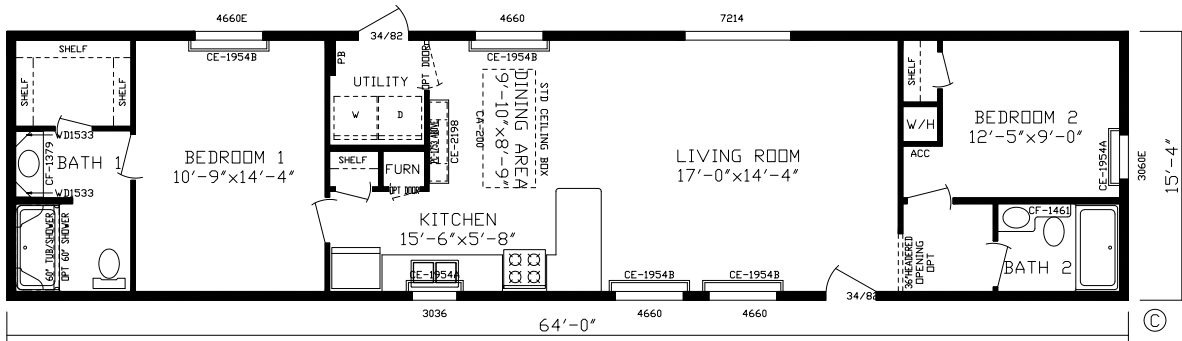


The Fleming Print #186504 2 Br 2 Bath 920 Sq. Ft. Print #186529 — Reverse Aisle



16 Wide

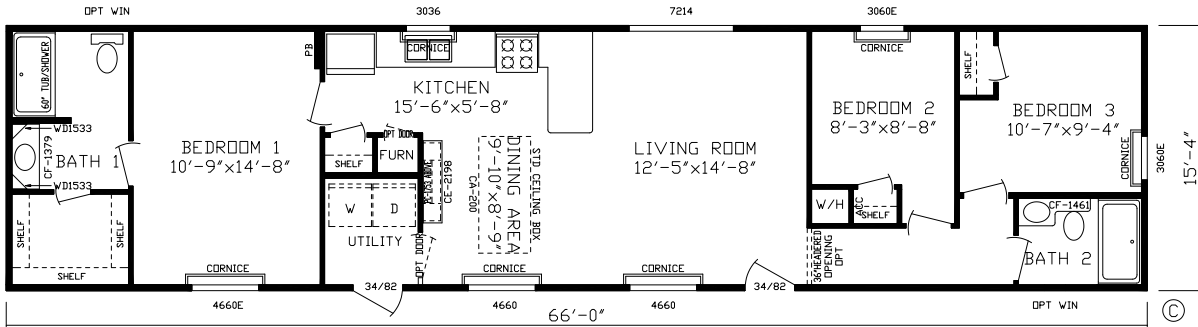
The Handler Print #186536 2 Br 2 Bath 981 Sq. Ft.



The Tesla Print #186527 3 Br 2 Bath 1,012 Sq. Ft. Print #186528 — 2 Bedroom Version

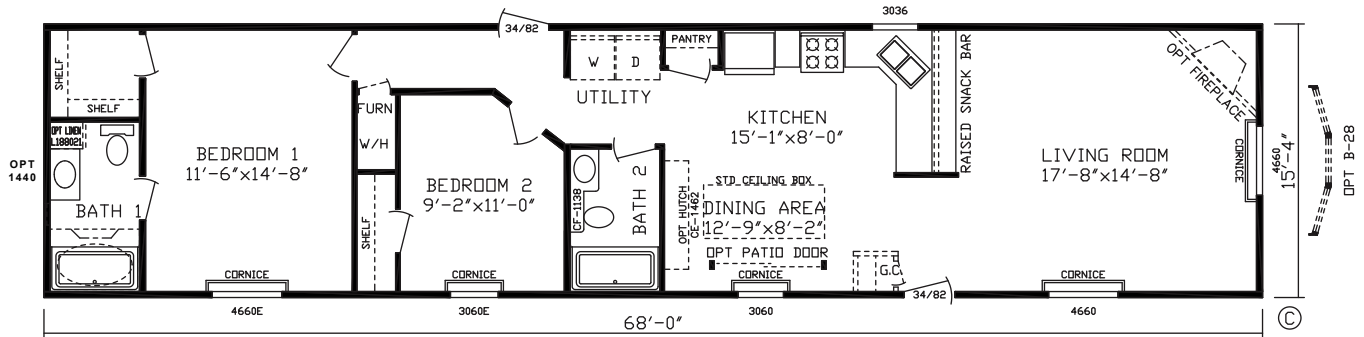


Shown with Optional Dormers & Vertical Siding

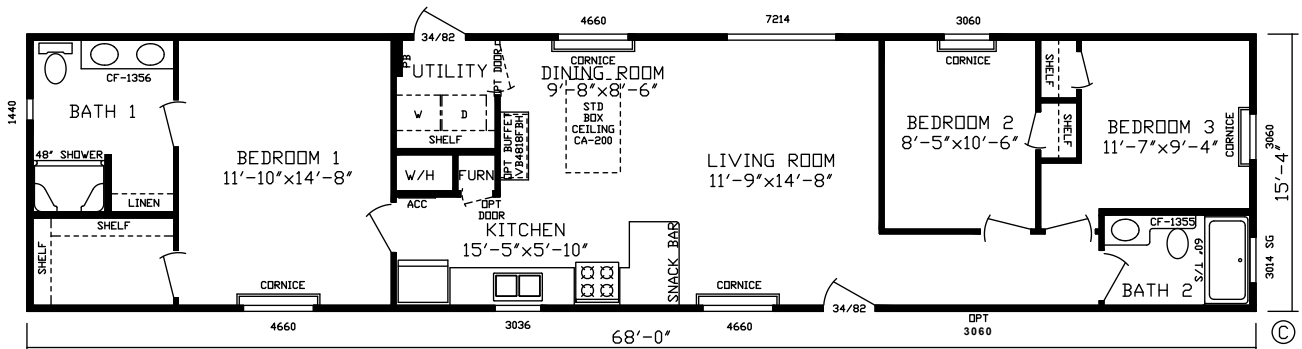


The Benz Print #186515 2 Br 2 Bath 1,043 Sq. Ft.

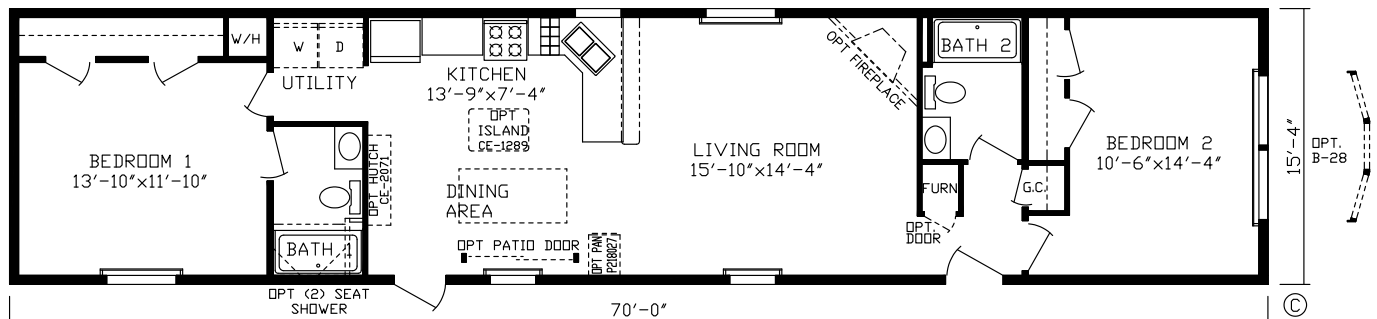
Print #186516 — Reverse Aisle



The Cullen Print #186502 3 Br 2 Bath 1,043 Sq. Ft.



The Hagans Print #186518 2 Br 2 Bath 1,073 Sq. Ft.

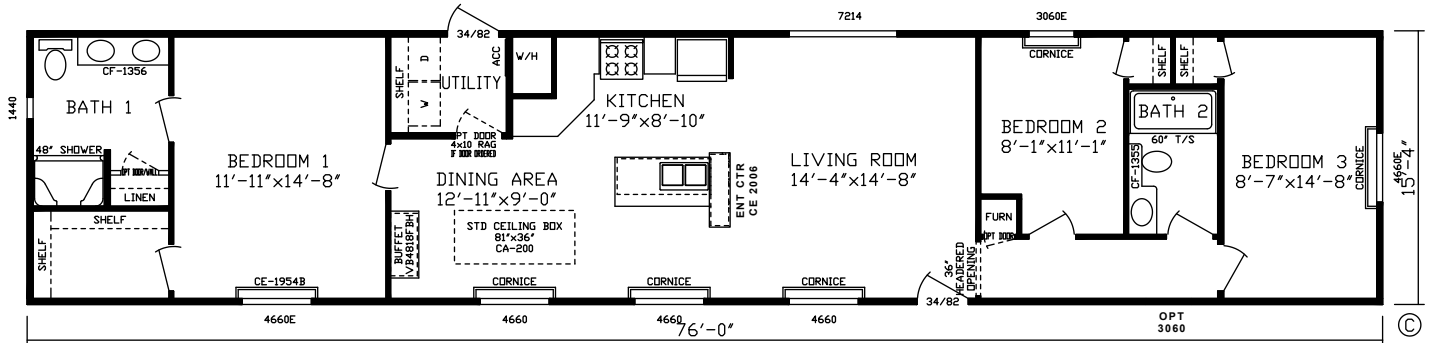


Renderings may differ from floor plans

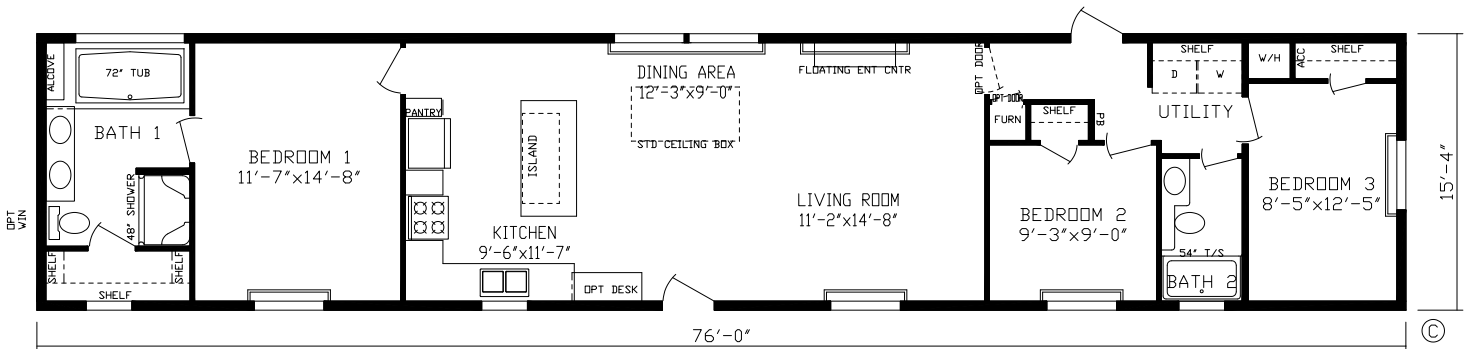
The Baird Print #186500 3 Br 2 Bath 1,165 Sq. Ft.

Print #186509 — Reverse Aisle

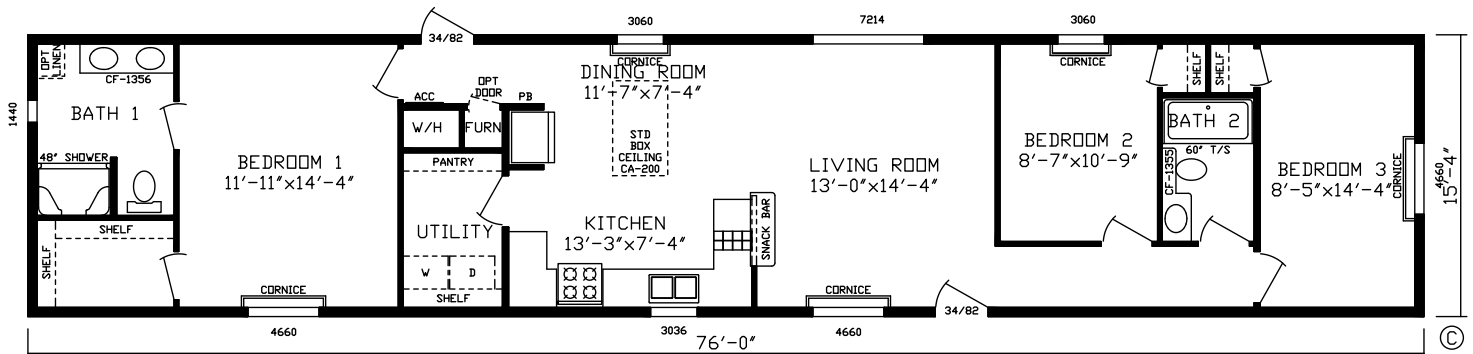
Print #186507 — 2 BR Version



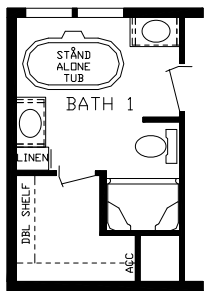
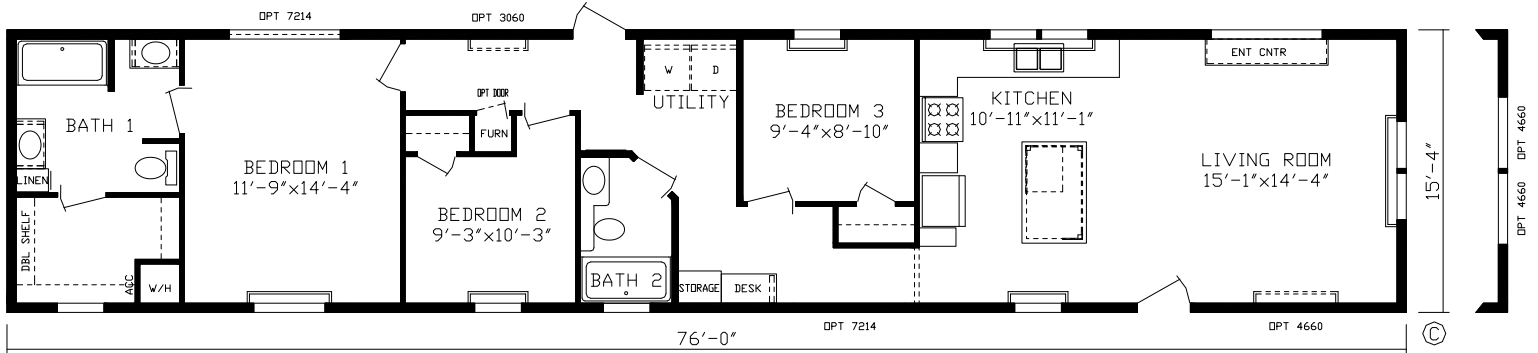
The Benjamin Print #186538 3 Br 2 Bath 1,165 Sq. Ft.



The Darby Print #186503 3 Br 2 Bath 1,165 Sq. Ft.



The Hertz Print #186533 3 Br 2 Bath 1,165 Sq. Ft.



RO-7100
Opt. Bath 1

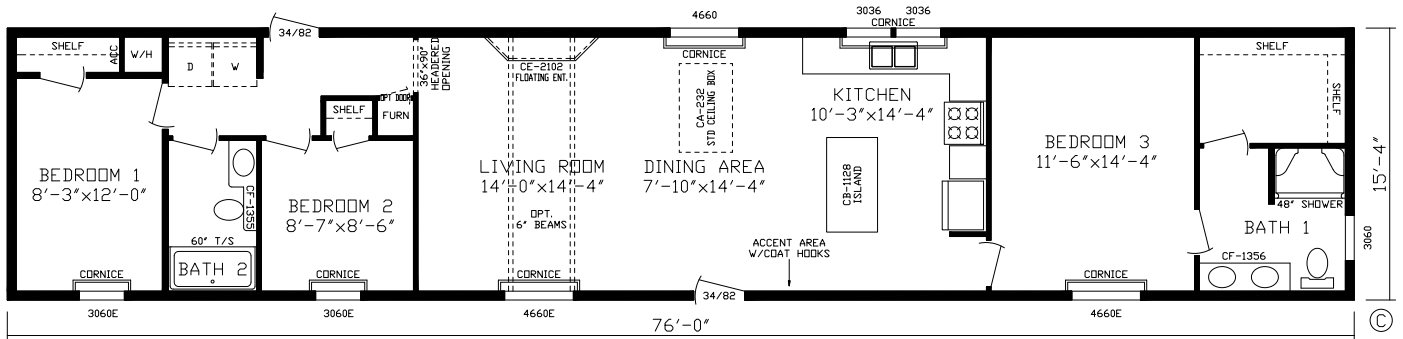


16 Wide

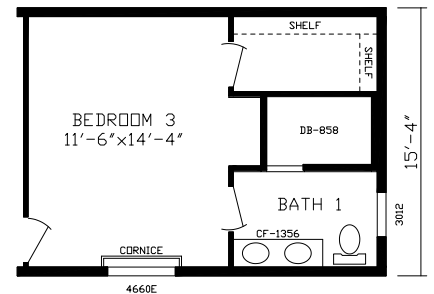
The Maxwell Print #186510 3 Br 2 Bath 1,165 Sq. Ft.

Print #186525 — Reverse Aisle

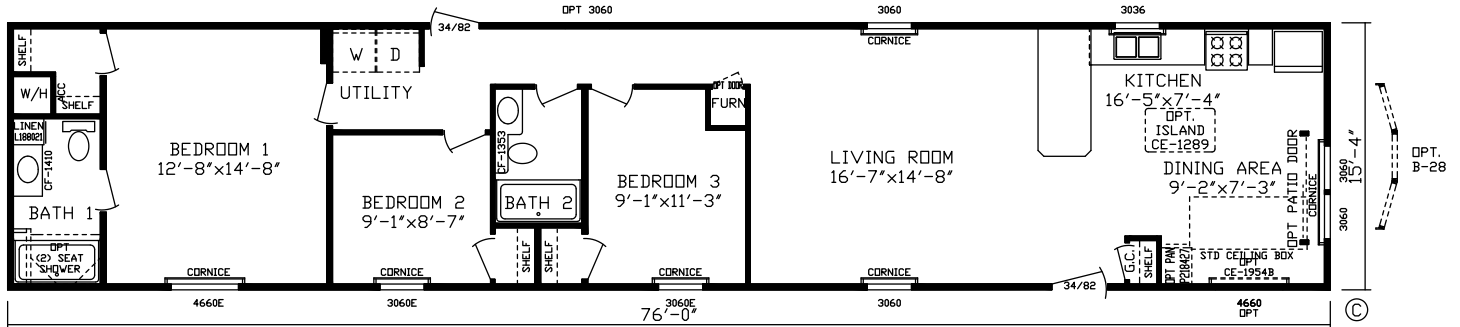
Print #186511 — Flip End-to-End



RO-6693
Opt.
Master Bedroom
& Bath

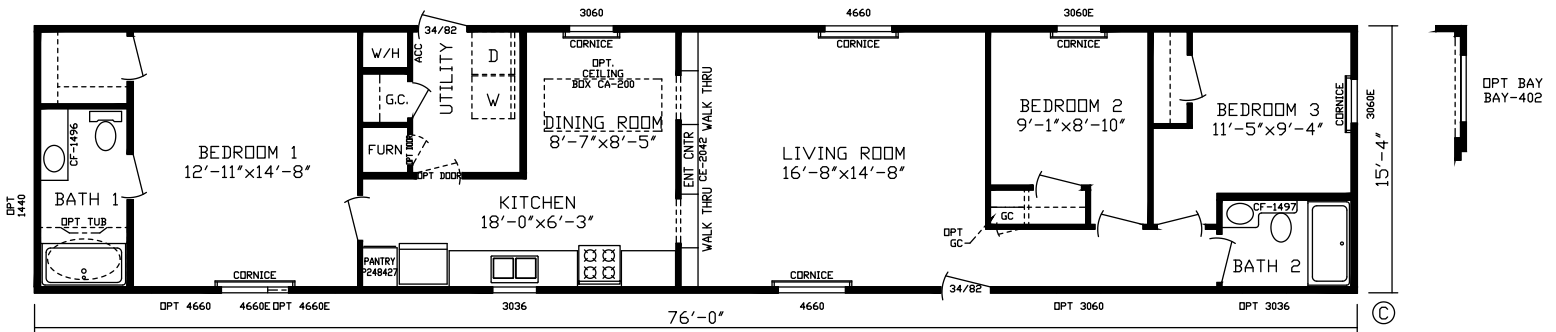


The McCoy Print #186522 3 Br 2 Bath 1,165 Sq. Ft.

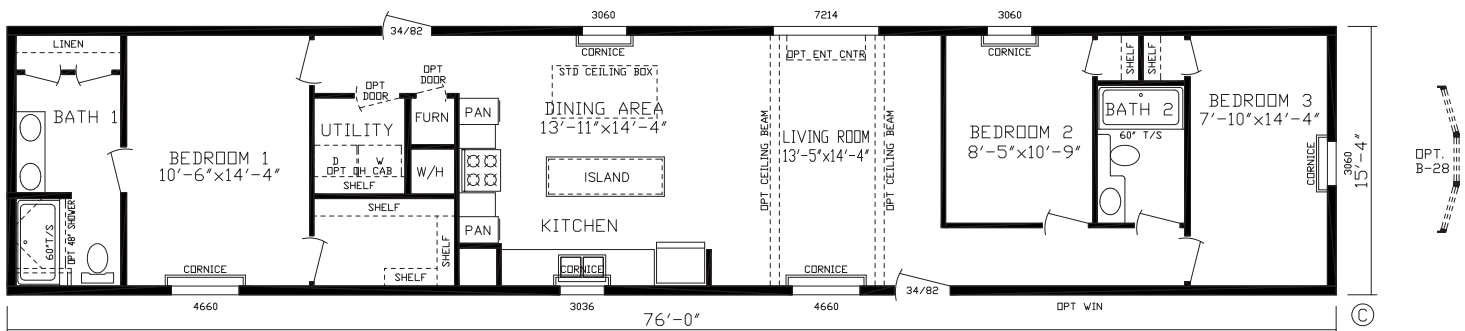


The Morgan Print #186520 3 Br 2 Bath 1,165 Sq. Ft.

Print #186521 — Reverse Aisle

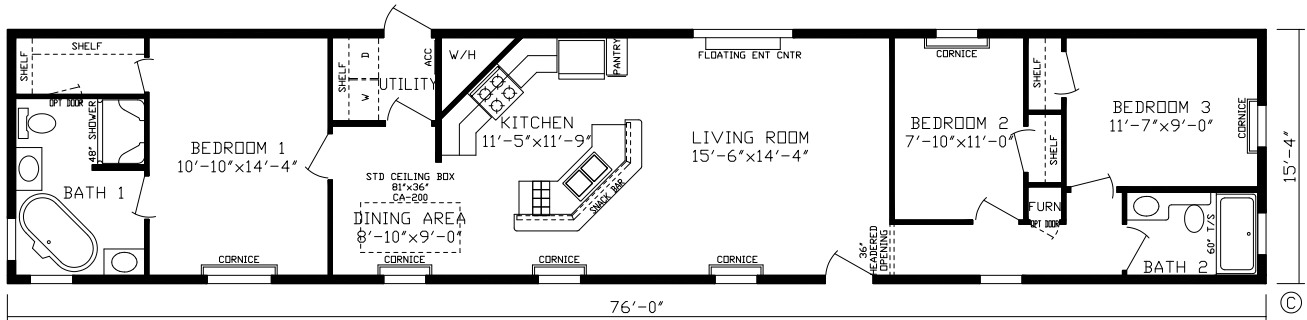


The Newton Print #186512 3 Br 2 Bath 1,165 Sq. Ft.

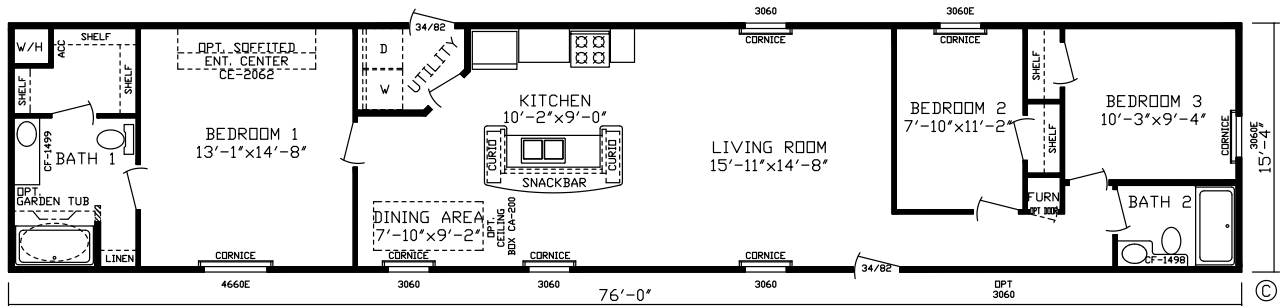


16 Wide

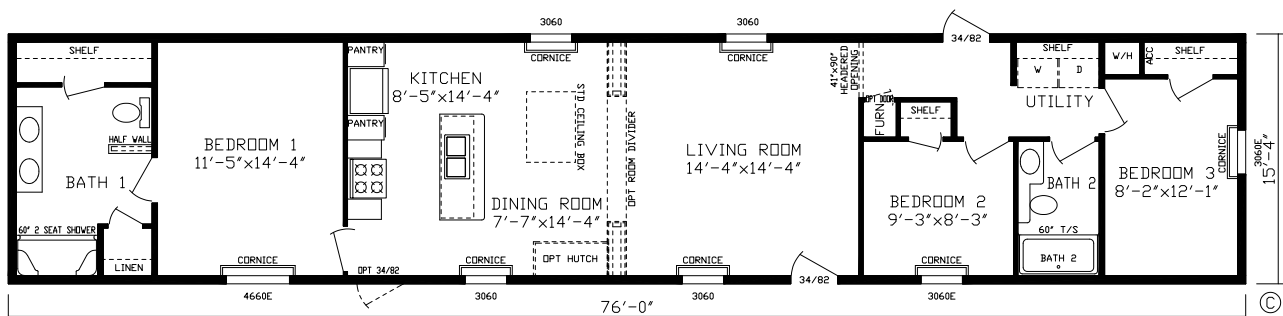
The Rutherford Print #186534 3 Br 2 Bath 1,165 Sq. Ft.



The Watt Print #186523 3 Br 2 Bath 1,165 Sq. Ft.



The Wright Print #186526 3 Br 2 Bath 1,165 Sq. Ft.



Energy Saving Standard Features of the Inspiration Home

- Kinro® Low E Thermopane Windows
- Exterior Sheathing
- R-29 Roof Insulation
- 2x4 Sidewalls w/R-11 Insulation
- Gas Furnace
- Positive Operating System
- 34" x 82" Decorator 6-Panel Steel Front Door w/Storm & Deadbolt
- 34" x 82" Steel 9-Lite Cottage Rear Door

Exterior & Construction

- Nominal 3/12 Roof Pitch
- 8' Sidewall Height w/Flat Ceiling
- Rafters 24" O.C.
- 16" O.C. Floor Joists
- Tongue & Groove OSB Floor Decking
- R-11 Floor Insulation
- Owens Corning® 25 Year Shingled Roof
- Royal Double 4" Dutch Vinyl Lap Siding
- Ice & Water Barrier
- Window Lineals Door Side
- Vinyl Siding Color Accent Wainscot Doors End



Floor Coverings

- Minute Man Quarry Carpet
- Congoleum® Roll Goods
- Rebond Carpet Pad
- Roll Goods in Baths, Kitchen, Dining Room, Utility & Foyer
- Tack Strip Carpet Installation in Living Room, Bedrooms, Halls
- Carpet Bar Where Applicable



Electrical

- Exterior GFI Weather Resistant Receptacle on Sidewall
- GFI Bath & Kitchen Receptacles
- Smoke Alarms
- Wire & Vent for Dryer
- Rust Coach Light at Front & Rear Door
- Recessed LED Can Lights in Kitchen, Dining Room, & Bedrooms
- Wire Brace for Ceiling Fan - Standard All Bedrooms
- 100 AMP Service



Décor

- 1/2" Decorative Vinyl on Gypsum Walls
- Textured Stippled Ceilings
- 3-5/8" Crown Molding in Living Room, Dining Room, Kitchen & Hall w/Flat Trim in Remainder of Home
- 3-1/2" Baseboard Molding in Living Areas
- 1-1/4" Door & Window Casing
- Mini Blinds Throughout
- Skirt / Shirt Shelving in Master Bedroom Closet
- Cornice Boards in Living Room & Bedrooms
- Ceiling Accent w/2 LED Can Lights in Dining Room

Plumbing

- Moen® Single Lever Bath Faucet w/Shower Head
- Plumbing for Washer
- 30 Gallon Electric Water Heater
- 7" Deep Stainless Steel Kitchen Sink
- Single Lever Kitchen Faucet w/Sprayer
- Main Water Shut-off Below Floor
- Water Heater Access Panel (Per Print)



Baths

- 1-Piece Fiberglass Tub / Shower in Baths
- Furniture Style Bath Lavs
- Pop-Up Drains on Bath Sinks w/Overflows
- Power Exhaust Fan
- Formica Backsplash
- Framed Mirrors
- Porcelain Lav
- Banjo Counter Top in Bath 2

Doors and Windows

- Easy Clean Tilt-Out Sash, Single-Hung Windows
- Kinro® White Low-E Vinyl Windows
- Dead Bolt Security Lock on Steel Front Door
- Floor Mounted Door Stops
- Triple Hinged Interior Doors
- Pre-Hung 6-Panel White Interior Doors
- Nickel Interior Door Knobs



Cabinetry

- 30" Overhead Kitchen Cabinets w/10" Cubbies
- Shaker Style Wrapped Cabinetry w/Wrapped Stiles
- Hidden Hinges
- Dove Tail Drawer Construction
- Side Mounted Drawer Guides
- Formica Kitchen Backsplash
- Shelf in Washer / Dryer Area
- Entertainment Center (Per Print)

Appliances

- Black 18 CF Frost Free Refrigerator
- Black 30" Standard Gas Range
- Stainless Steel Euro Range Hood





**2181 East Market Street
Nappanee, IN 46550
800.777.8787**

Note: Fairmont Homes reserves the right to make changes in price, colors, materials, components and specifications and to discontinue models at any time;without notice or obligation. Fairmont Homes assumes no responsibility for any error in type or print reproduction of specifications or floor plans in this brochure.

©2019 Fairmont Homes LLC, ALL RIGHTS RESERVED

Rev 06/2019

fairmonthomes.com